

CROCHETED THROW

With raised flowers on a treble fabric background and 3 bobble edging



MEASUREMENTS

Throw Measures (approx): 120 x160cm

MATERIALS

Panda Magnum 8ply (100g balls)

Main Colour (MC)	14
1st Contrast (C1)	1
2nd Contrast (C2)	1
3rd Contrast (C3)	1

One 4.00mm crochet hook or THE REQUIRED SIZE TO GIVE CORRECT TENSION; knitter's needle for darning in ends.

TENSION

This throw has been designed at a tension of 17tr and 11 rows to 10cm over tr fabric, using 4.00mm hook.

ABBREVIATIONS

approx=approximately; **beg**=begin/ning; **ch**=chain; **cm**=centimetres; **cont**=continue; **'Crab St'**=work as for dc but working from left to right instead of right to left so that sts are worked backwards; **dc**=double crochet; **inc**=increase, increasing; **incl**=inclusive, including; **lp/s**=loop/s; **patt**=pattern; **rem**=remain/ing; **rep**=repeat; **sl st**=slip stitch; **st/s**=stitch/es; **tr**=treble; **yoh**=yarn over hook.

Foundation chain=the length of chain made at the beginning of a piece of crochet as a basis for constructing the fabric.

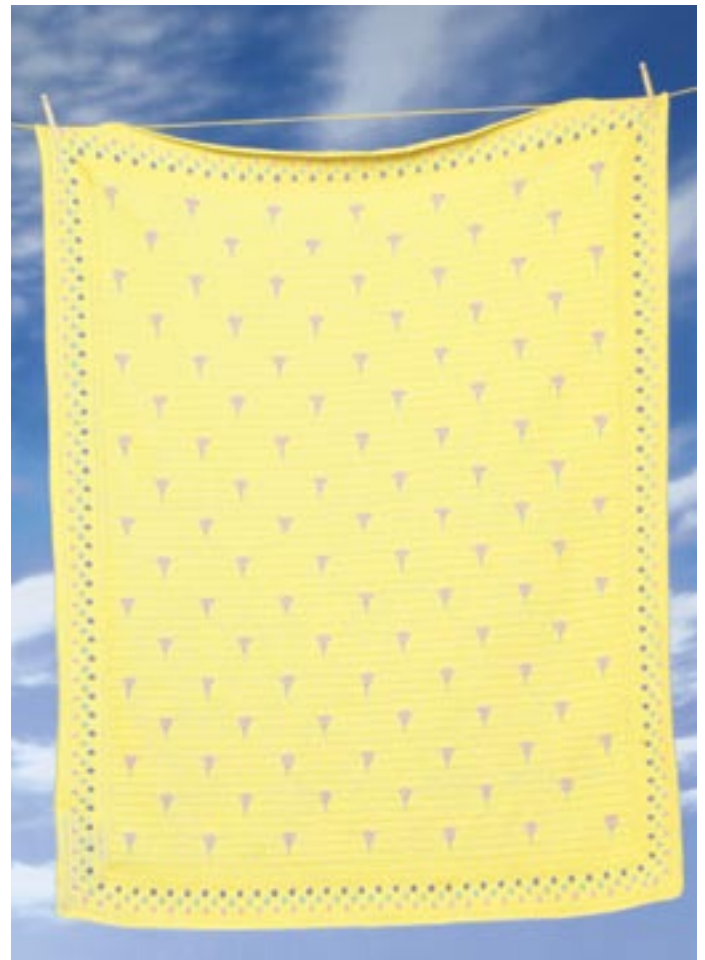
Turning chain=one, or more chains, depending upon the length of stitch required, worked at the beginning of a row.

SPECIAL ABBREVIATIONS

'Stem' = Using C2, yoh, insert hook in next st 1 row below and draw a lp up to same height as last st, yoh, insert hook in same st 2 rows below and draw a lp up to same height as last st, yoh and draw through first 4 lps on hook, using MC, draw a lp through rem 2 lps.

'Flower' = Using C1, * (yoh) twice, insert hook from front of work around **'Stem'** (see diagram) from right to left (take care to insert hook below the 2 loose ends of C2 to keep Stem firm) and draw up a lp, (yoh and draw through 2 lps on hook) 3 times, rep from * 4 more times, using MC to draw through last lp of last st.

'Bobble' = Using C3, * yoh and draw up a lp in next st, yoh and draw through first 2 lps on hook, rep from * 3 more times in same st, using MC, yoh and draw through all 5 lps on hook.



THROW

NOTE: Turning ch counts as 1tr throughout.

Using 4.00mm hook and MC, make 185 foundation ch.

1st Row: Miss 3ch, 1tr in each ch to end ... 183tr.

Working from stitch detail diagram or written instructions (refer page 2), work rows 2 to 17 incl.

Rows 2 to 17 incl form patt.

Cont in patt until throw measures approx 134cm from beg, ending with patt row 9.

Fasten off.

EDGING

With right side facing, using 4.00mm hook and MC, working along other side of foundation ch and beg at corner, 3ch, 2tr in corner, work 169tr evenly along side, 3tr in corner, work 217tr evenly along next side, 3tr in corner, work 169tr evenly along next side, 3tr in corner, work 217tr evenly along next side, sl st in top of turning ch.

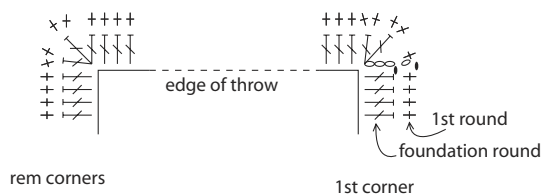
1st Round: 1ch, 1dc in same place as sl st, * (2dc in next tr) twice, 1dc in each st to centre st at corner, rep from * 3 times, sl st in first dc.

Work 1 round tr and 3 rounds dc evenly around edge, inc at corners to keep work flat and being sure to have a multiple of 6 plus 3 extra along each side (between corner sts) at end of last round. Fasten off.

6th Round: Join MC with a sl st in a corner st, 3ch, 2tr in same place as sl st, (1tr in next st, **'Bobble'**, * 1tr in each of next 5 sts, **'Bobble'**, * rep from * to * to within one st of corner st, 1tr in next st, 3tr in corner st) 4 times, omitting 3tr at end of last rep, sl st in top of turning ch.

EDGING CORNERS

Inc at corners to keep work flat



Using MC, work 1 round dc, inc at corners to keep work flat.

Using MC work 1 round tr, inc at corners to keep work flat and working Bobbles (as before, using C2) halfway between previous bobbles.

Rep last 2 rounds working bobbles in C1.

Using MC for rem and inc at corners to keep work flat, work 1 round dc, 1 round tr, 3 rounds dc and 1 round 'Crab St'.

Fasten off.

Written Instructions

Row 2: (1dc, 1ch) in first st, 1tr in each st to end.

Rep row 2 twice.

Row 5: (1dc, 1ch) in first st, 1tr in each of next 6tr, * 'Stem', miss 1tr (covered by Stem), 1tr in each of next 27tr, rep from * to last 8tr, 'Stem', miss 1tr, 1tr in each of next 7tr.

Row 6: As row 2.

Row 7: (1dc, 1ch) in first st, 1tr in each of next 4tr, * 'Flower', miss 5tr (behind Flower), 1tr in each of next 23tr, rep from * to last 10tr, 'Flower', miss 5tr, 1tr in each of next 5tr.

Rep row 2 five times.

Row 13: (1dc, 1ch) in first st, 1tr in each of next 4tr, * 1tr in each of next 17tr, 'Stem', miss 1tr, 1tr in each of next 10tr, rep from * to last 10tr, 1tr in each of next 10tr.

Row 14: As row 2.

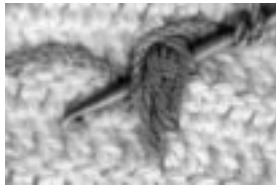
Row 15: (1dc, 1ch) in first st, 1tr in each of next 4tr, * 1tr in each of next 15tr, 'Flower', miss 5tr, 1tr in each of next 8tr, rep from * to last 10tr, 1tr in each of next 10tr.

Row 16: As row 2.

Row 17: As row 2.

KEY - Shaded area represents st repeat.

- o = ch
- + = dc
- ∩ = tr
- ⊗ = 'Cluster'
- ⊗ = 3ch (turning ch)
- ← = 'Crab St'



working around Stem

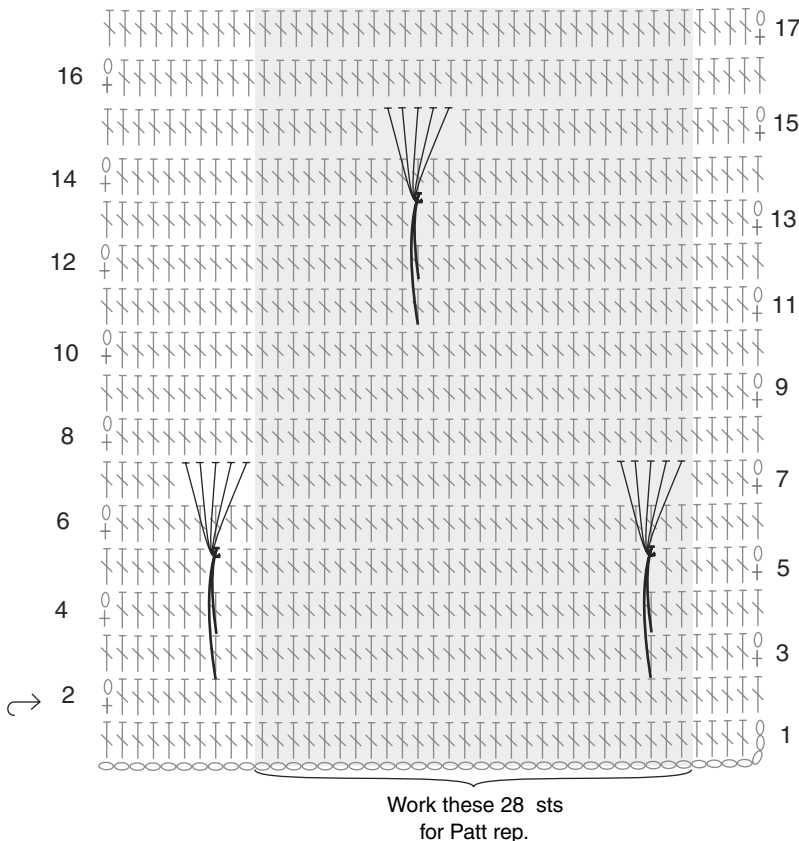


= 'Flower' - Using C1, * (yoh) twice, insert hook from front of work around 'Stem' from right to left (take care to insert hook below the 2 loose ends of C2 to keep Stem firm) and draw up a loop, (yoh and draw through 2 loops on hook) 3 times, rep from * 4 more times, using MC to draw through last loop of last st.

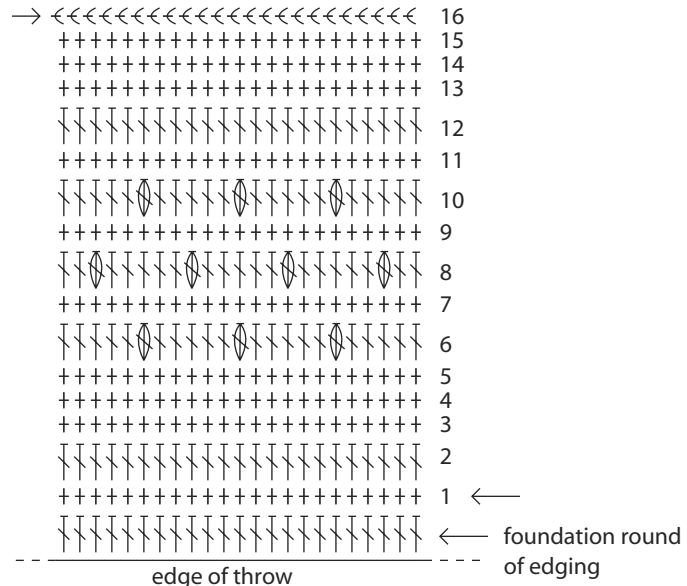


= 'Stem' - Using C2, yoh, insert hook in next st 1 row below and draw a loop up to same height as last st, yoh, insert hook in same st 2 rows below and draw a loop up to same height as last st, yoh and draw through first 4 loops on hook, using MC, draw a loop through rem 2 loops.

STITCH DETAIL OF THROW



STITCH DETAIL OF EDGING



If you need help with your pattern, please phone (03) 9380 3888 or Toll Free 1800 337 032 and quote Z162